

PLACEMENT INSTRUCTIONS

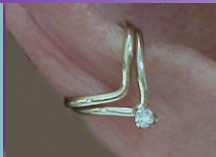


EASY ON: Slide on EARLOOPS over at the top and down along inside ridge, to fit naturally in place! **Adjust gap once**, as you would adjust a cuff bracelet, to fit comfortably yet secure.

OUR GUARANTEE

Our goal is your satisfaction! If you are a first-time EARLOOPS wearer and they are not as expected, you may return for exchange or full refund, excluding shipping charges, within 7 days of date received. Call for return authorization. Due to handcrafted nature, slight variations occur.

EARCUFFS



Made to adorn the space in the center of your ear. "One size fits most", these simple, adjustable, stackable EARCUFFS coordinate with your existing earrings for that extra-hole look. Sold as singles.

A. Wrap F. 1V-Diam



A. ECWrap
Silver. \$38
Gold-fill wrap \$69
14 wrap on silver
\$88

F. EC1V-Diam*
5 pt. Diamond
14 kt.y.gold. . \$298



B. EC2-V
Silver. \$38
14 kt.y.gold. . \$178

CC. EC1-B
Silver. \$23
Gold-fill . . . \$46



C. EC3-B
Silver. \$38
14 kt.y.gold. . \$198

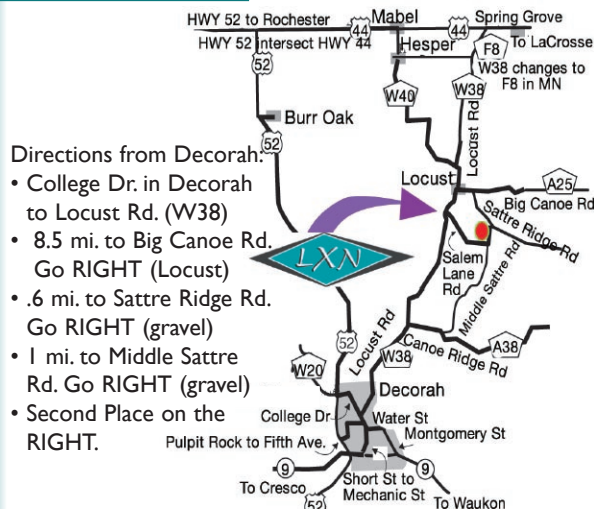
BB. EC2V-Diam*
5 pt. Diamond
14 kt.y.gold
\$318

*Diamonds SI1, G-H

STUDIO Open by appt. 563 382-2295



Take a scenic drive 15 minutes northeast of Decorah, to visit our working Studio & Gallery, also featuring contemporary artwork by other artists.



Directions from Decorah:

- College Dr. in Decorah to Locust Rd. (W38)
- 8.5 mi. to Big Canoe Rd. Go RIGHT (Locust)
- .6 mi. to Sattre Ridge Rd. Go RIGHT (gravel)
- 1 mi. to Middle Sattre Rd. Go RIGHT (gravel)
- Second Place on the RIGHT.

SHIPPING

- UPS insured.
- Use street address, UPS does not deliver to P.O. Boxes.
- Allow 7-10 days for in-stock items.

Shipping
Up to \$99 \$15.95
\$100-\$299 \$17.45
\$300-\$399 \$17.95
Add 75¢ per addit. \$100

TO ORDER

Email: darla@earloops.com
Web: www.earloops.com
Phone: M-F, 10 - 5, Central 563 382-2295
USPS Mail - Send to:
Ellickson Jewelry Collection
Darla & Glen Ellickson
3175 Middle Sattre Rd.
Decorah, IA 52101-7416

Gift certificates available. Sent with our latest EARLOOPS brochure. Ellickson Jewelry features an extensive array of one-of-a-kind pins, rings, bracelets, and necklaces, visit us at a show for current inventory. Show schedule on web-site.

EARLOOPS

NO HOLES REQUIRED™

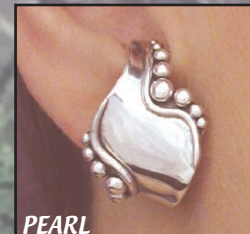


BOLT

Anatomically designed to fit the curvature of your ear. For pierced and non-pierced ears.



STYX



PEARL

Comfortable • Easy to put on • Adjustable. They rest on your inner ear ridge, which supports the weight. You hardly notice you're wearing them! No pressure on your ear lobes. No tugging on your pierced holes.

Custom designs • Silver & Gold • Since 1979



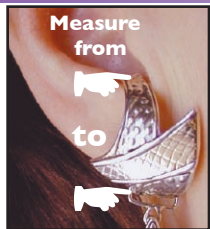
Ellickson Jewelry Collection
Studio & Gallery

WWW.EARLOOPS.COM

CONTEMPORARY • AWARD WINNING • TIMELESS • JEWELRY AS UNIQUE AS YOU ARE

CLASSICS The EARLOOP that started it all.

CLASSICS hug your ears like hoop earrings. These styles fit Short and Medium earlobes best. Earloops are sold in pairs of Tops or Drops. The drops detach. Tops are required for the drops to attach to.



EARLOOPS all start as a medium. Most can be adjusted to fit 3 sizes:
 SHORT/size 3 1/2"
 MEDIUM/size 4 3/4"
 LONG/size 5 7/8"
 Measure the earlobe closely, most comfortable as a close fit. The majority of lobes are a medium.

J. Plain - tops Silver\$149	Small/2.5" ..\$149	Large/3.7/8" . \$239
JJ1. Plain - drops Silver/gold-fill\$135		
K. Shapes - tops Silver\$149	O. Petal - tops Silver\$149
KK. Shapes - drops Silver\$149	OO. Petal - drops Silver\$149
N. Styx - tops Silver\$149	Q. Dome - tops Silver\$149
NNL.Drops/long/Silver\$149	QQ. Dome-drops Silver\$149
NP. Styx - Pin/Necklace		P. Float - tops Silver z\$149
(not shown, design like drops)		PPS.Drops/short Silver\$149
		PPL.Drops/long Silver\$179



CURVES A woman can never have too many CURVES!

Based on the fit of our best-seller, CLASSICS - Styx style, CURVES feature a contoured outside edge, which tucks in near your face. Anatomically designed, these earring styles echo the curve of your ear - for true comfort. These styles fit most earlobes well.

R. Bolt - Tops Silver\$149	U. Triple - Tops Silver\$149
Silver w/14kt.y.g.Ctr\$365	Silver w/GFill wires\$159
RR. Bolt - Drops Silver\$149	UU. Triple - Drops Silver\$149
Silver w/14kt.y.g.Ctr\$365	Silver w/GFill wires\$159
RP. Bolt - Pin (not shown, design like drop)		VVL. Drops/long Silver\$149
Silver\$149	W. Curl - Tops Silver\$149
Silver w/14kt.y.g.Ctr\$365	WWS. Drops/short Silver\$149
T. Dots - Tops Silver\$149	WWL. Drops/long Silver\$149
Silver w-14/20 gold-fill\$169	X. SnakeSilver\$149
TTS. Drops/short Silver\$149	XXS. Drops/short Silver\$149
TTL. Drops/long Silver\$149	XXL. Drops/long Silver\$149
Silver-14/20 gold-fill\$169		



BORDERS Elegantly edged to frame your ears.

Based on our best-selling fit which curves onto your face, Borders are carefully crafted to naturally fit with a more angled shape, work well for longer earlobes.

A1. Twist Silver\$149	D2. Mesh Drops Silver\$149
B1. Double Silver\$149	E1. Techno Silver\$149
B2. Dble. Drops silver\$149	E2. Techno Drops Silver\$149
C1. Ethnic Silver\$149	F1. Pearls Silver\$149
C2. Ethnic Drops Silver\$149	F2. Pearls Drops Silver\$149
C3. Ethnic Drops w/discs Silver	\$179	G1. Floral Silver\$149
D1. Mesh Silver\$149	G2. Floral Drops Silver\$149



Prices and designs are subject to change without notice. Email for current pricing and inventory. Designs are the exclusive property of Darla Ellickson
 ©7/1995
 Rev. 7/2011

Also available in 14 kt. yellow gold • call for items in stock and pricing.

See placement instructions on other side. Call for recommendations for specific ear shapes. Questions? ph: 563 382-2295 email: DARLA@EARLOOPS.COM